

ELECTRODE-HOLDERS

The sensors for pH, Redox and Conductivity have to be installed on the system using proper electrode-holder that guarantee the correct mechanical protection and the impermeability degree.

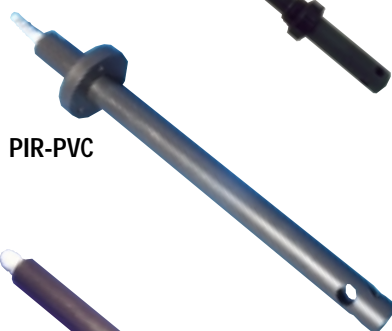
The electrodes of pH and Redox can be immersed in tanks, inserted in pipes or put in proper containers for the passage of sample liquid drawn from the system.

It is very important to lay stress on the immersion models with adjustable flange that has to be linked together with the counterflange that allows their fast extraction. The version with floating platform suits to follow the free water surface in deep tanks.

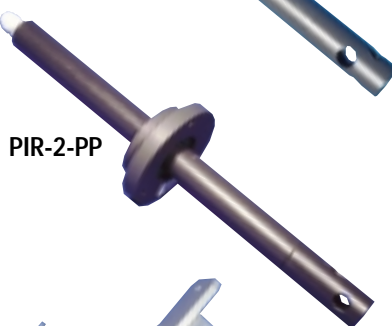
The versions for two electrodes in polypropylene allow to put in the same armature two sensors (for example pH and PT100).



PI



PIR-PVC



PIR-2-PP



PI-G

IMMERSION ELECTRODE-HOLDERS (in length order)

Model	Immersion	Electrodes	Temperature	Material
PI-PVC-400	400 mm	1	40 °C	PVC
PI-PVC-800	800 mm	1	40 °C	PVC
PI-PVC-1000 (*)	1000 mm	1	40 °C	PVC
PI-PVC-1500 (*)	1500 mm	1	40 °C	PVC
PIR-PVC-200	100... 250 mm	1	40 °C	PVC
PIR-PVC-400	100... 450 mm	1	40 °C	PVC
PIR-PVC-800	100... 850 mm	1	40 °C	PVC
PIR-PVC-1000 (*)	100... 1050 mm	1	40 °C	PVC
PIR-PVC-1500 (*)	100... 1550 mm	1	40 °C	PVC
PIR-2-PP-400	100... 450 mm	2	80 °C	PP
PIR-2-PP-800	100... 850 mm	2	80 °C	PP
PIR-2-PP-1000 (*)	100... 1050 mm	2	80 °C	PP
PIR-2-PP-1500 (*)	100... 1550 mm	2	80 °C	PP

(*) product available upon request

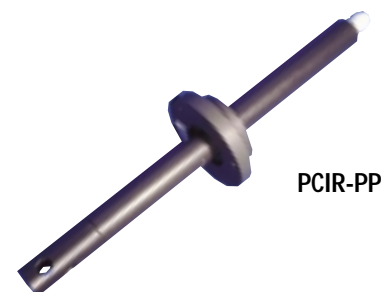
PI-G (*)	float	1	40 °C	PVC
B/PI-G (*)	fixing bracket 2 m		40 °C	PVC

Electrode-holders

ELECTRODE-HOLDER WITH 3/4" G. ELECTRODE CONNECTION, WITHOUT PROTECTION

For use with conductivity cells with 3/4" G. connector with cable or with IP67 connector.

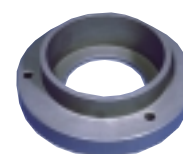
Model	Insertion depth	Cells	Temperature	Material
PCIR-PP-400	100... 450 mm	1	80 °C	PP
PCIR-PP-800	100... 850 mm	1	80 °C	PP
PCIR-PP-1000 (*)	100... 1050 mm	1	80 °C	PP
PCIR-PP-1500 (*)	100... 1550 mm	1	80 °C	PP



PCIR-PP

FLANGE FOR RAPID EXTRACTION

Model	Inside diameter	Outside diameter	Material	Fixing
FER	65 mm	140 mm	PVC	4 pore Ø 6 mm



FER

IMMERSION ELECTRODE-HOLDER WITH SPRAY CLEANING

Special electrode-holders for connection to cleaning liquid injector. Periodic electrode cleaning guarantees linearity and stability of measurement without manual maintenance.

Model	Insertion depth	Electrodes	Temperature	Bar	1/h min-max
PIA-PVC-400 (*)	400 mm	1	40 °C	2...6	100...600
PIA-PVC-800 (*)	800 mm	1	40 °C	2...6	100...600



PIA-PVC

ELECTRODE-HOLDERS WITH BLEED ASSEMBLY

They are used for in-line measurements the line in which a part of the sample is deviated from the main flow to the electrode-holder; the input can be disposed at atmospheric pressure or on the sample recirculation at a 6 bar maximum pressure.

Model	Description	Electrodes	Max temperature	Max pressure
PSS 7 (*)	transparent cell	3	40 °C	6 bar
PSS 7-A (*)	acid resistant PVC cell	3	40 °C	6 bar



PSS 7

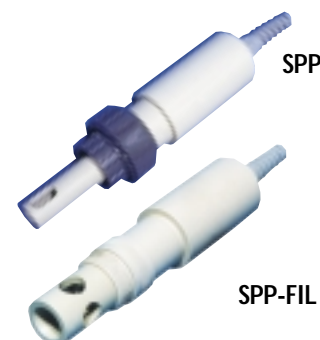
PSS 7A

PSS 3

ELECTRODE-HOLDERS PRESSURE

Pressure electrode-holders are used for in-line mounting; the electrode always has to be put vertically or inclined to the flow at a maximum of 45°. The connection line of the electrode-holder has to be intercepted by two valves in input and in output in order to interrupt the flow during the maintenance of the electrodes.

Model	Description	Max temperature	Max pressure	Mounting	Mounting
PSS 3	PP	80 °C	7 bar	1/2" G.M.	Epoxy
SPP (*)	PP + PVC	60 °C	16 bar	1" G.F.	PG 13,5
SPP - FIL (*)	PP	80 °C	16 bar	3/4" o 1" 1/4 G.M.	PG 13,5



SPP

SPP-FIL

(*) product available upon request