



Motor Driven Dosing Pumps SPRING Series

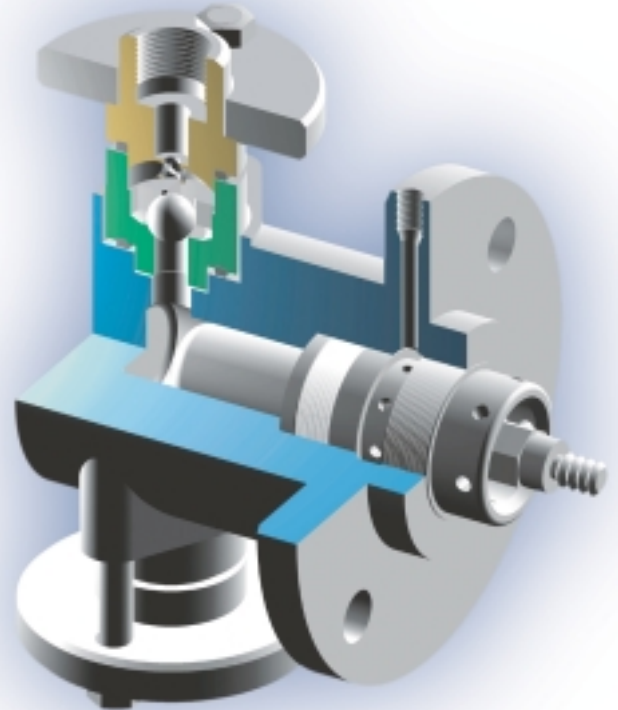


PLUNGER METERING PUMPS AB-AC Series

up to 200 litres/hour and 20 bar

Simplicity, reliability and easy installation are the foremost features of this series of pumps with heads in plastic material or stainless steel, ceramic pistons and self-adjusting seals

- Stroke adjustment from 0 to 100% running or at rest
- Adjustment locking device
- Metering precision $\pm 1\%$ in the adjustment range between 10 and 100%
- Spring return mechanism
- Electric motors in accordance with European Standards, multi-voltage and multi-frequency, 230-460V/3/50-60Hz, IP55, insulation class F with over-temperature B, ambient temperature $-20 +40\text{ }^{\circ}\text{C}$
- Working temperature $-20 +100\text{ }^{\circ}\text{C}$ for stainless-steel versions and $-10 +50\text{ }^{\circ}\text{C}$ for PP versions
- "Duplex" version for all models
- Options: single-phase or flameproof
- Automatic Flow rate Adjustment
- Electric Servo-Motor: input signal in voltage or current 4-20 mA, supply 24V AC.



AB	28	A	51	0	A1	4	LEGEND
							Motor poles
							Motor type
							Adjustment
							Pump head type
							Strokes / min.
							Plunger diameter mm.
							Series



AC	49	B	21	0	B1	4	LEGEND
							Motor poles
							Motor type
							Adjustment
							Pump head type
							Strokes / min.
							Plunger diameter mm.
							Series



AB-AC Series

Pump head materials

Pump Head Type	Body	Valves				Plunger	Plunger Seals
		Body	Seals	Balls	Gaskets		
51	PP	PP	PTFE	PYREX	FPM	CER	FPM

Pump Head Type	Body	Valves				Plunger	Plunger Seals
		Body	Seals	Balls	Gaskets		
21	316	316L	316L	316L	-	316L	FPM

AB SERIES

Pump Model	50 Hz			60Hz			AB_51(PP)				
	Flow rate at max pressure		Max speed	Flow rate at max pressure		Max speed	Max pressure	Electric motor	Connections	suc/dis	
	lph	gph	Strokes /min	lph	gph	Strokes /min	barg	p.s.i.	kW	Ø mm	
AB 2 0 A 5 1 0 A 1 4	8,5	2,2	50	10,2	2,7	60	10	145	0,18	4/6	
AB 2 0 D 5 1 0 A 1 2	17	4,5	100	20,4	5,4	120	10	145	0,18	4/6	
AB 2 8 A 5 1 0 A 1 4	17	4,5	50	20,4	5,4	60	10	145	0,18	4/6	
AB 2 8 D 5 1 0 A 1 2	34	9,0	100	40,8	10,8	120	10	145	0,18	4/6	
AB 3 5 A 5 1 0 A 1 4	25	6,6	50	30	7,9	60	9	130,5	0,18	8/12	
AB 3 5 D 5 1 0 A 1 4	50	13,2	100	60	15,9	120	9	130,5	0,18	8/12	
AB 3 5 G 5 1 0 A 1 2	100	26,5	200	120	31,7	240	6	87	0,18	8/12	
AB 4 7 D 5 1 0 A 1 4	100	26,5	100	120	31,7	120	5	72,5	0,18	8/12	
AB 4 7 G 5 1 0 A 1 2	200	52,9	200	240	63,5	240	3	43,5	0,18	8/12	

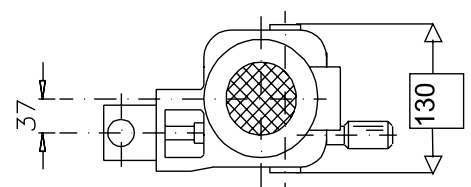
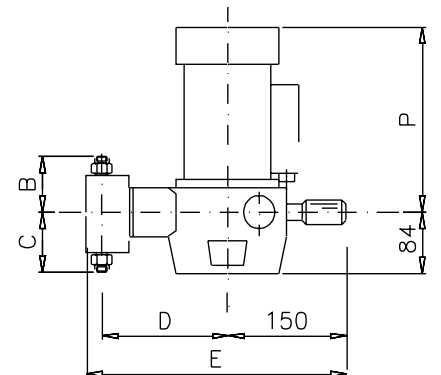
Pump Model	50 Hz			60Hz			AB_21(SS)				
	Flow rate at max pressure		Max speed	Flow rate at max pressure		Max speed	Max pressure	Electric motor	Connections	suc/dis	
	lph	gph	Strokes /min	lph	gph	Strokes /min	barg	p.s.i.	kW	Ø BSP	
AB 2 0 A 2 1 0 A 1 4	8,5	2,2	50	10,2	2,7	60	20	290	0,18	1/4" M	
AB 2 0 D 2 1 0 A 1 2	17	4,5	100	20,4	5,4	120	20	290	0,18	1/4" M	
AB 2 8 A 2 1 0 A 1 4	17	4,5	50	20,4	5,4	60	15	217,5	0,18	1/4" M	
AB 2 8 D 2 1 0 A 1 2	34	9,0	100	40,8	10,8	120	15	217,5	0,18	1/4" M	
AB 3 5 A 2 1 0 A 1 4	25	6,6	50	30	7,9	60	9	130,5	0,18	1/4" F	
AB 3 5 D 2 1 0 A 1 4	50	13,2	100	60	15,9	120	9	130,5	0,18	1/4" F	
AB 3 5 G 2 1 0 A 1 2	100	26,5	200	120	31,7	240	6	87	0,18	1/4" F	
AB 4 7 D 2 1 0 A 1 4	100	26,5	100	120	31,7	120	5	72,5	0,18	1/4" F	
AB 4 7 G 2 1 0 A 1 2	200	52,9	200	240	63,5	240	3	43,5	0,18	1/4" F	

Dimensions and weights

PP	Dimensions mm.				Weight w/o motor Kg.
	B	C	D	E	
AB20	71	71	164	345	4
AB28	75	75	164	345	4
AB35	75	75	197	374	5
AB47	125	125	199	375	5

AISI 316	Dimensions mm.				Weight w/o motor Kg.
	B	C	D	E	
AB20	67	67	164	327	5
AB28	70	70	164	327	5
AB35	70	70	193	358	6
AB47	70	70	194	360	6

Electric Motors	2 poles	4 poles	Standard		EEXD	
	kW	kW	P mm	Kg	P mm	Kg
	0.18	0.18	220	6	280	12



Pump head materials

Pump Head Type	Body	Valves				Plunger	Plunger Seals
		Body	Seals	Balls	Gaskets		
22	316	316L	316L	316	-	316L	PTFE

Pump Head Type	Body	Valves				Plunger	Plunger Seals
		Body	Seals	Balls	Gaskets		
21	316	316L	316L	316	-	316L	FPM

AC SERIES

Performances:	50 Hz			60Hz			AC_22(SS)			
	Flow rate at max pressure		Max speed	Flow rate at max pressure		Max speed	Max pressure	Electric motor		Connections suc/dis
	lph	gph	Strokes /min	lph	gph	Strokes /min	barg	p.s.i.	kW	Ø BSP
Pump Model										
AC 15 B 2 2 0 B 1 4	11,5	3,0	59	13,8	3,7	71	40	580	0,37	1/4"F
AC 15 C 2 2 0 B 1 4	15,2	4,0	78	18,2	4,8	94	40	580	0,37	1/4"F
AC 15 D 2 2 0 B 1 4	19,5	5,2	100	23,4	6,2	120	40	580	0,37	1/4"F
AC 15 E 2 2 0 B 1 2	22,8	6,0	117	-	-	-	40	580	0,37	1/4"F
AC 25 B 2 2 0 B 1 4	32,4	8,6	59	38,9	10,3	71	40	580	0,37	3/8"F
AC 25 C 2 2 0 B 1 4	42,8	11,3	78	51,4	13,6	94	40	580	0,37	3/8"F
AC 25 D 2 2 0 B 1 4	55	14,6	100	66	17,5	120	40	580	0,37	3/8"F
AC 25 E 2 2 0 B 1 2	64	16,9	117	-	-	-	40	580	0,37	3/8"F
AC 35 B 2 2 0 B 1 4	64	16,9	59	76,8	20,3	71	40	580	0,37	3/8"F
AC 35 C 2 2 0 B 1 4	85	22,5	78	102	27,0	94	31	450	0,37	3/8"F
AC 35 D 2 2 0 B 1 4	109	28,8	100	130,8	34,6	120	24	348	0,37	3/8"F
AC 35 E 2 2 0 D 1 2	127	33,6	117	-	-	-	31	450	0,55	3/8"F
AC 50 B 2 2 0 B 1 4	130	34,4	59	156	41,3	71	20	290	0,37	1/2"F
AC 50 C 2 2 0 B 1 4	173	45,8	78	207,6	54,9	94	15	218	0,37	1/2"F
AC 50 D 2 2 0 B 1 4	221	58,5	100	265,2	70,2	120	12	174	0,37	1/2"F
AC 50 E 2 2 0 D 1 2	259	68,5	117	-	-	-	15	218	0,55	1/2"F

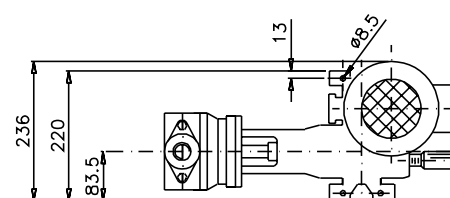
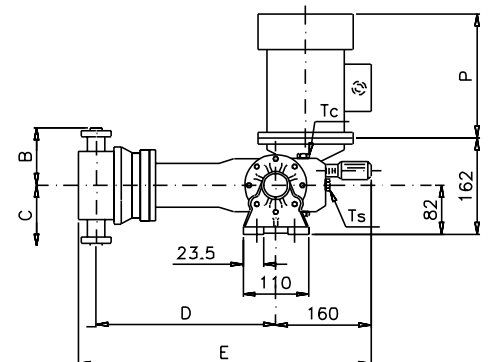
Performances:	50 Hz			60Hz			AC_22(SS)			
	Flow rate at max pressure		Max speed	Flow rate at max pressure		Max speed	Max pressure	Electric motor		Connections suc/dis
	lph	gph	Strokes /min	lph	gph	Strokes /min	barg	p.s.i.	kW	Ø BSP
Pump Model										
AC 49 B 2 1 0 B 1 4	127	33,6	59	152	40,3	71	20	290	0,37	1/2"F
AC 49 C 2 1 0 B 1 4	168	44,4	78	202	53,3	94	15,5	225	0,37	1/2"F
AC 49 D 2 1 0 B 1 4	216	57,1	100	259	68,6	120	12	174	0,37	1/2"F
AC 49 E 2 1 0 B 1 2	253	66,9	117	-	-	-	15,6	226	0,55	1/2"F
AC 63 B 2 1 0 B 1 4	214	56,6	59	257	67,9	71	12	174	0,37	1/2"F
AC 63 C 2 1 0 B 1 4	282	74,6	78	338	89,5	94	9,3	135	0,37	1/2"F
AC 63 D 2 1 0 B 1 4	362	95,8	100	434	114,9	120	7,3	106	0,37	1/2"F
AC 63 E 2 1 0 B 1 2	424	112,2	117	-	-	-	9,4	136	0,55	1/2"F
AC 86 B 2 1 0 B 1 4	390	103	59	468	124	71	6,6	96	0,37	3/4"F
AC 86 C 2 1 0 B 1 4	515	136	78	618	163	94	5	73	0,37	3/4"F
AC 86 D 2 1 0 B 1 4	660	175	100	792	210	120	4	58	0,37	3/4"F
AC 86 E 2 1 0 D 1 2	773	204	117	-	-	-	5,1	74	0,55	3/4"F
AC 98 B 2 1 0 B 1 4	507	134	59	608	161	71	5	73	0,37	1"F
AC 98 C 2 1 0 B 1 4	670	177	78	804	213	94	4	58	0,37	1"F
AC 98 D 2 1 0 B 1 4	860	228	100	-	-	-	3	44	0,37	1"F

Dimensions and weights

PP	Dimensions mm.				Weight w/o motor Kg.
	B	C	D	E	
AC15_22	61	66	272	470	14,5
AC25_22	72	77	272	470	15
AC35_22	92	97	272	470	16
AC50_22	92	97	272	470	16,5

PP	Dimensions mm.				Weight w/o motor Kg.
	B	C	D	E	
AC49_21	92	97	272	470	16,5
AC63_21	92	97	272	470	17
AC86_21	120	125	316	510	24
AC98_21	137	147	316	510	25

Electric Motors	2 poles	4 poles	Standard		EEXD	
	kW	kW	P mm	Kg	P mm	Kg
Gr. 71	0,37	0,37	230	6	290	17
	0,37	0,37	230	6	290	17

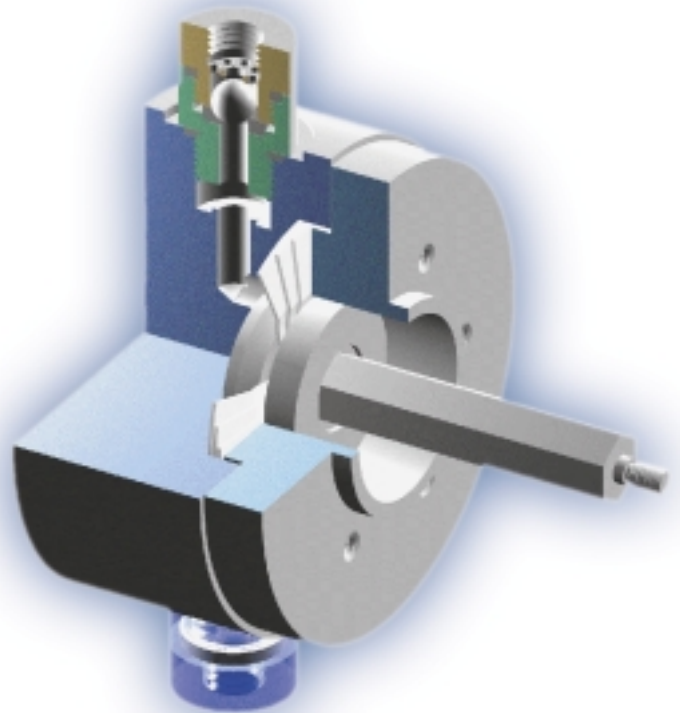


DA-DB Series

MECHANICAL DIAPHRAGM METERING PUMPS DA-DB Series up to 820 litres/hour and 10 bar

The characteristics of D mechanical diaphragm pumps offer a hermetic solution that is reliable until to 10 bar
The multi-layer membrane in PTFE and the selection of different materials for the parts in contact mean high compatibility in a vast range of applications.

- Stroke length adjustment from 0 to 100% running or at rest
- Adjustment locking device
- Metering precision $\pm 1\%$ in the adjustment range between 10 and 100%
- Suction lift 2 water column metres except mod. 10MP118
- Spring return mechanism
- Electric motors in accordance with European Standards, multi-voltage and multi-frequency, 230-460V/3/50-60Hz, IP55, insulation class F with over-temperature B, ambient temperature $-20 +40\text{ }^{\circ}\text{C}$
- Working temperature $-20 +100\text{ }^{\circ}\text{C}$ for stainless-steel and $-10 +50\text{ }^{\circ}\text{C}$ for plastic versions
- “Duplex” version for all models except DB89
- Options: single-phase or flameproof
- Automatic Delivery Adjustment
- Electric Servo-Motor: input signal in voltage or current 4÷20 mA, supply 24V AC.



DA	35	A	51	0	A1	4	LEGEND
							Motor poles
							Motor type
							Adjustment
							Pump head type
							Strokes / min.
							Diaphragm diameter mm.
							Series



DB	89	A	51	0	C1	4	LEGEND
							Motor poles
							Motor type
							Adjustment
							Pump head type
							Strokes / min.
							Diaphragm diameter mm.
							Series



Pump head materials

Pump Head Type	Body	Valves				Diaphragm
		Body	Seals	Balls	Gaskets	
51	PP	PP	PTFE	PYREX	FPM	PTFE

Pump Head Type	Body	Valves				Diaphragm
		Body	Seals	Balls	Gaskets	
21	316	316L	316L	316	-	PTFE

DA SERIES

Performances:	50 Hz			60Hz			DA_51(PP)			
Pump Model	Flow rate at max pressure		Max speed	Flow rate at max pressure		Max speed	Max pressure		Electric motor	Connections suc/dis
	lph	gph	Strokes /min	lph	gph	Strokes /min	barg	p.s.i.	kW	Ø BSP
DA35A510A14	9	2,4	50	10,8	2,9	60	10	145	0,18	3/8" M
DA35D510A14	18	4,8	100	21,6	5,7	120	10	145	0,18	3/8" M
DA48A510A14	16	4,2	50	19,2	5,1	60	5	73	0,18	3/8" M
DA48D510A14	32	8,5	100	38,4	10,2	120	5	73	0,18	3/8" M
DA89A510A14	50	13,2	50	60,0	15,9	60	2	29	0,18	1/2" F
DA89D510A14	100	26,5	100	120,0	31,7	120	2	29	0,18	1/2" F

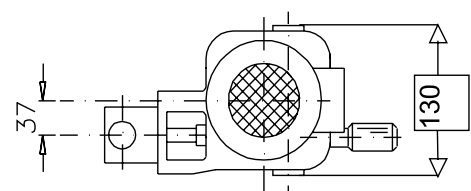
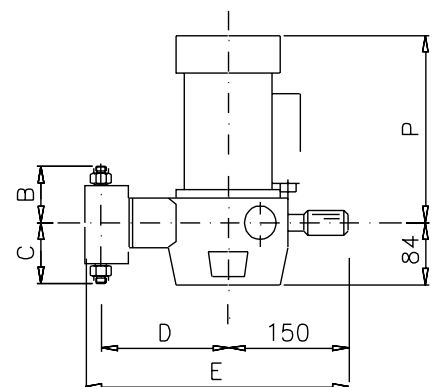
Performances:	50 Hz			60Hz			DA_21(SS)			
Pump Model	Flow rate at max pressure		Max speed	Flow rate at max pressure		Max speed	Max pressure		Electric motor	Connections suc/dis
	lph	gph	Strokes /min	lph	gph	Strokes /min	barg	p.s.i.	kW	Ø BSP
DA35A210A14	9	2,4	50	10,8	2,9	60	10	145	0,18	1/4" M
DA35D210A14	18	4,8	100	21,6	5,7	120	10	145	0,18	1/4" M
DA48A210A14	16	4,2	50	19,2	5,1	60	5	73	0,18	1/4" M
DA48D210A14	32	8,5	100	38,4	10,2	120	5	73	0,18	1/4" M
DA89A210A14	55	14,6	50	66,0	17,5	60	2	29	0,18	1/4" F
DA89D210A14	100	29,1	100	132,0	34,9	120	2	29	0,18	1/4" F

Dimensions and weights

PP	Dimensions mm.				Weight w/o motor Kg.
	B	C	D	E	
DA35_51	81	81	164	335	4,5
DA48_51	81	81	176	335	4,5
DA89_51	136	136	164	351	6,5

PP	Dimensions mm.				Weight w/o motor Kg.
	B	C	D	E	
DA35_21	81	66	162	330	6
DA48_21	81	66	162	330	6
DA89_21	104	109	168	350	9

Electric Motors	2 poles	4 poles	Standard		EEXD	
	kW	kW	P mm	Kg	P mm	Kg
	0.18	0.18	220	6	280	12



Adjustable safety valves (SS316/PTFE)



MODEL	Flow Rate l/h	Pressure (bar)		Connections BSP	CODE
		min	max		
VS1S	250	0	19	1/2" F	VS1S250019
		20	45		VS1S250045
		46	150		VS1S250150
VS2S	650	0	13	3/4" F	VS2S650013
		14	30		VS2S650030
		31	100		VS2S650100

Adjustable safety valves (FPM diaphragm)



MODEL (MATERIAL)	Flow Rate l/h	Pressure (bar)		Connections BSP	CODE
		min	max		
PRM-S (SS316)	300	0	5	3/8" F	PRM1S03005
	800			3/4" F	PRM2S08005
	1500			1" F	PRM3S15005
	4500			1" 1/2 F	PRM4S45005
PRM-P PVC	300	0	5	3/8" F	PRM1P03005
	800			3/4" F	PRM2P08005
	1500			1" F	PRM3P15005
	4500			1" 1/2 F	PRM4P45005

"Y" Suction filters



MODEL (MATERIAL)	Connections BSP	CODE
FYP PVC	3/8" F	FYP3240200
	1/2" F	FYP3230040
	3/4" F	FYP3230060
	1" F	FYP3230080
	1 1/4" F	FYP3230100
	1 1/2" F	FYP3230120
FYP (SS316)	3/8" F	FYS3240098
	1/2" F	FYS3240100
	3/4" F	FYS3240110
	1" F	FYS3240120
	1 1/4" F	FYS3240121
	1 1/2" F	FYS3240122

Backpressure valves (SS316)



MODEL	Flow Rate l/h	Pressure (bar)		Connections BSP	CODE
		min	max		
VZX-S-02	50	2		1/4" M	VZX1S00502
	100			1/4" F	VZX3S01002
	200			3/8" F	VZX4S02002
	420			1/2" F	VZX5S04202
	800			3/4" F	VZX6S08002
	1650			1" F	VZX7S16502
	3300			1" 1/2 F	VZX8S33002
PRM-P PVC	100	10		1/4" F	VZX3S01010
	200			3/8" F	VZX4S02010
	420			1/2" F	VZX5S04210
	800			3/4" F	VZX6S08010
	1650			1" F	VZX7S16510
	3300			1" 1/2 F	VZX8S33010

Adjustable Backpressure valves (FPM diaphragm)



MODEL (MATERIAL)	Flow Rate l/h	Pressure (bar)		Connections BSP	CODE
		min	max		
VSM-S (SS316)	300	0	5	3/8" F	VSM1S03005
	800			3/4" F	VSM2S08005
	1500			1" F	VSM3S15005
	4500			1" 1/2 F	VSM4S45005
VSM-P PVC	300	0	5	3/8" F	VSM1P03005
	800			3/4" F	VSM2P08005
	1500			1" F	VSM3P15005
	4500			1" 1/2 F	VSM4P45005

Pulsation bag HST series



Capacity (L)	Pressure (bar)	Material		Connections BSP	CODE
		Body	Diaphragm		
0,04	10	PVC	FPM	3/8" F	HSTP004V01
0,1					HSTP010V01
0,35				1/2" F	HSTP035V01
0,8					HSTP080V01
1,5				3/4" F	HSTP150V01
2,3					HSTP130V01
5				1" 1/2" F	HSTP500V01

Pulsation bag HTR series



Capacity (L)	Pressure (bar)	Material		Connections BSP	CODE
		Body	Diaphragm		
1,5	70	SS316	NBR	1" NPT	HTRS150N07
4,5	50			1" 1/2 NPT	HTRS450N05
10				2 BSP F	HTRSH10N05
0,1	230			3/8" BSP F	HTRS010N23
0,35				1/2" BSP F	HTRS035N23
0,5					HTRS050N23
0,8				HTRS080N23	
1,5				3/4" BSP F	HTRS150N23
2,3					HTRS230N23

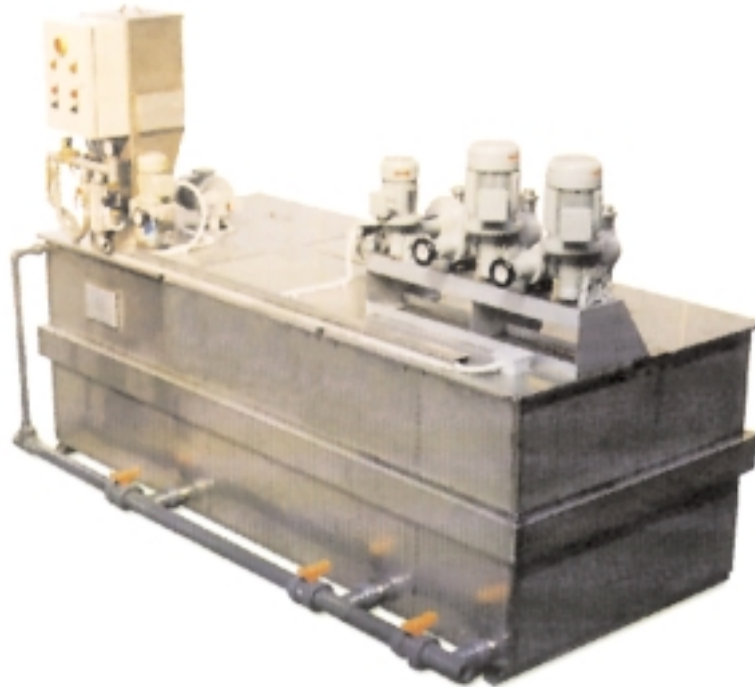
Fitting-Testing unit AR series



Pressure (bar)	CODE
6	AR10PM0006
12	AR11PM0012
40	AR01PM0040
60	AR02PM0060
100	AR03PM0100
160	AR04PM0160
250	AR05PM0250
400	AR06PM0400

POLYCENDOS automatic systems for the preparation of polyelectrolyte

The demand for the automatic and continuous preparation of polyelectrolytes, needed in water-treatment applications, is brilliantly solved by POLYCENDOS, complete and autonomous systems for the dilution, dispersion, ageing, storage and dosing. The standard models are in stainless steel and include seven versions from 550 l/h to 8000 l/h; further executions are available upon request.



Automatic preparation of polyelectrolyte units, "POLYCENDOS"

CENDOS dilution and dosing system

SEKO can provide a line of standard and tailored systems, with tanks from 100 to 1000 litres, dosing pumps and relevant accessories, to satisfy the most common requirements of preparation and dosing of chemicals in water-treatment plants and other industrial applications.



Dilution and dosing units "CENDOS"

POLYMAN manual systems for the preparation of polyelectrolytes

Conceived for sporadic requirements, they are available in four standard models with tanks from 100 to 1000 litres.



Manual preparation of polyelectrolytes units, "POLYMAN"



YOUR DOSING PARTNER

SEKO GROUP HEADQUARTER

Via Salaria km. 92,200 • 02010 S. Rufina (RI) • Italy
Tel. +39.0746.605801 • Fax +39.0746.607072
web site: www.seko.it • e-mail: sales@seko.it

SEKO Deutschland
GERMANY

SEKO do Brasil
BRAZIL

SEKO Asia Pacific
SINGAPORE

SEKO Dosing Systems
USA

SEKO France
FRANCE

SEKO Iberica
SPAIN

SEKO Italia
ITALY

SEKO UK
UNITED KINGDOM

SEKO South Africa
SOUTH AFRICA

