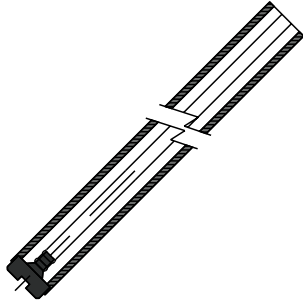


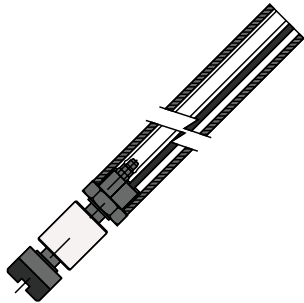
Accessories



Suction system applicable to the PA, PE, PG, PM, PR and PS pumps, length 450 mm, diameter 21 mm.

COD.

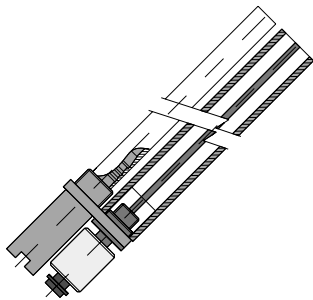
9900100053



Suction system complete with level probe for PR pumps with Lev. Length 450 mm, diameter 21 mm.

COD.

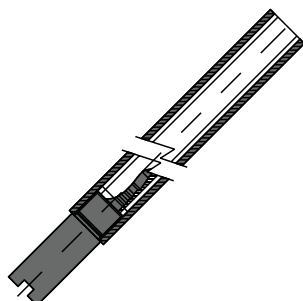
9900100048



Suction system complete with level probe for 8x12 pipe, length 450 mm

COD.

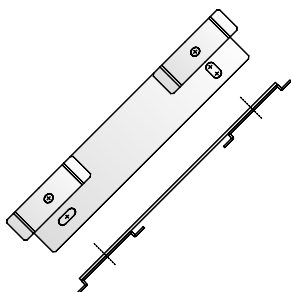
9900100050



Suction system for 8x12 pipe, length 450 mm

COD.

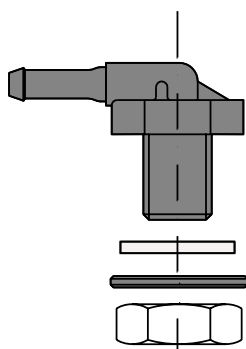
9900100051



Double stainless steel fixing bracket.
For model PA, PR, PS and PM peristaltic metering pumps

COD.

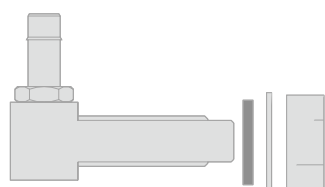
0000120002



Through connection for input into the detergent tank
(diameter of hole 12 mm.) Skin pack of 5 off

COD.

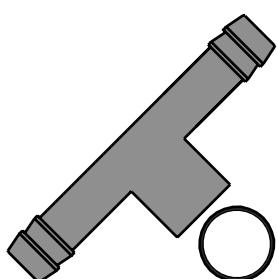
9900107084



Stainless steel through connection for entering the detergent tank
(diameter of hole 10 mm).

COD.

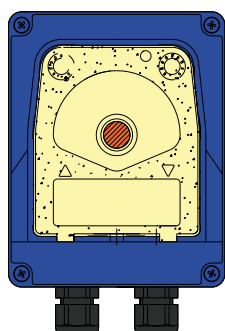
9900060073



T connection for connecting the rinsing aid injection system with
a Gf 1/8 threaded connection. Input and output connections for
pipe with an inside diameter of 12 mm.

COD.

0000106182



Level alarm system, will take up to 2 Lev-4 level probes and
provides a signalling lamp for indicating the lack of product,
equipped with an additional output for a remote alarm.
Power supply: 230 VAC (24 VAC on request).

COD.

PAL0000A0000