

Versatility in proportional dosing

The TEKNA DPZ series electromagnetic metering pumps is a result of SEKO's innovative projects and the working closely with our world-wide customer. Design, materials and the simplicity of use are the features of TEKNA DPZ series electromagnetic metering pumps.



User interface

The control board is user friendly with simple flow adjustments. Each feature is easily identified through the built in keyboard and there is no symbol to be interpreted. To avoid accidental modifications to parameters, a special procedure may be implemented.

Versatility and ruggedness

All TEKNA series have IP65 rate enclosure made of polypropilene reinforced with glass fiber. This allows the pumps to be water and impact resistant and corrosion free. Versatile installation as TEKNA series pumps allow for three fixing possibilities; wall mounting with only one, two or four fixing point; base mounting (on tank or existing wall mounting bracket); water meter mounting.



Reliability

All SEKO pumps are tested using modern technologies; their reliability is assured through use of high quality materials and intensive laboratory test, before the final test.



Proportional pump

The pump accept dry contact inputs and dose proportionally to the input pulse frequency. The pumps manage the input in two ways:

n:1

n:1 MODE

It's a multiplying proportional mode. By entering a value, in the range 1 and 9999, for parameter n, the step-up ratio is set, i.e. step-up with: n = 100, 1 pulse = 100 pump strokes - n = 250, 1 pulse = 250 pump strokes.

In this mode, the dosage rate with n can be adjusted by varying the percent value on display. This double adjustment feature enables our pumps to adapt to water meters with any pulse/liter ratio.

1:n

1:n MODE

It's a dividing proportional mode. By entering a value, in the range 1 and 9999, for parameter n, the step-down ratio is set, i.e. step-down with:

n=500, 500 pulses=1 pump stroke - n = 25, 25 pulses=1 pump strokes.

In this mode the pump stroke rate is adapted to the time period between two subsequent pulses.

Memory

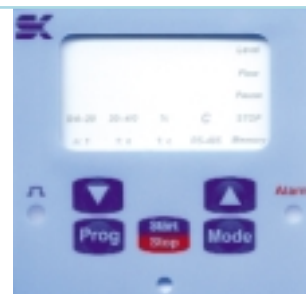
MEMORY FUNCTION

External pulses arriving whilst the pump is delivering a previous set of n strokes can be registered and worked off. The storage capacity is 65535 external pulses. When the memory is not empty the memory icon flashes. When the memory is full the red led on the front panel is activated (if available).

Level

LEVEL CONTROL

Two inputs for an early warning alarm and a lock of chemical alarm. An alarm relay may be provided as an optional. The alarm conditions are easily visible through the level icon on the display, the red alarm led flashing (early warning) or constantly lit (lack of chemical); the alarm relay is activated (if available).



Technical data

Liquid contacted materials

Head type: **STANDARD**

SP

Pump Head

PP

Connectors

PP

Valve balls

Pyrex

Seals

FPM or EPDM

Diaphragm

PTFE

Characteristics

Power Supply
230V 50-60Hz -10% + 15%

Isolation class
F

Protection degree
IP65

Working temperature
-10...40 °C

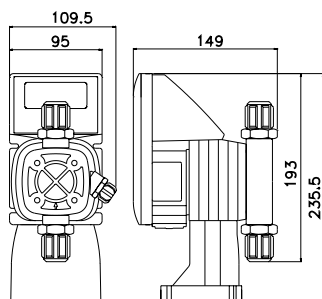
Pump is supplied with 1,5 metre power supply cable and european plug

Data obtained with water at ambient temperature and suction height 1,5 metres

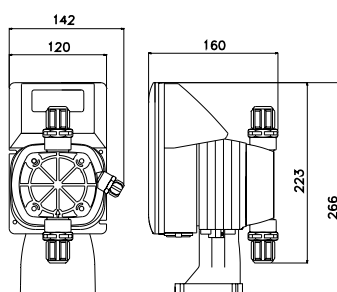
Model	Back Pressure	Flow rate	cc/stroke	stroke/min	Connections	Weight
	Bar	L/h				
601	12	1,5	0,06	400	4/6	1,7
	10	2	0,08			
	6	2,5	0,10			
602	8	5	0,21	400	4/6	1,7
	5	6	0,25			
	1	9	0,38			
901	16	6	0,25	400	4/6	3,1
	14	7	0,29			
	12	8	0,33			
902	10	10	0,42	400	4/6	3,1
	6	12	0,50			
	2	15	0,63			
903	5	25	1,04	400	8/12	3,2
	4	40	1,67			
	3	50	2,08			
904	2	60	2,50	400	8/12	3,2
	1	80	3,33			
	0	100	4,17			

Codifica Pompe

Pump type	Function	Model	Power supply	Head type
D	PZ	602	A	SP
D= Digital TEKNA series	PZ: proportional to external digital signals	See technical data table	A = 230 Vac 50-60 Hz B = 24 Vac 50-60 Hz C = 115 Vac 50-60 Hz	See technical data table



601 and 602 TEKNA Series



901, 902, 903 and 904 TEKNA Series