

Versatility and range

The innovative TEKNA series electromagnetic metering pumps with digital drive is a result of SEKO's 25 years of working closely with our world-wide customers. These multifunctional metering pumps maintain the high reliability that is synonymous with SEKO quality. All TEKNA series have IP 65 rated enclosure made of Polypropilene reinforced with glass fiber. This allows the pumps to be water and impact resistant and corrosion free.

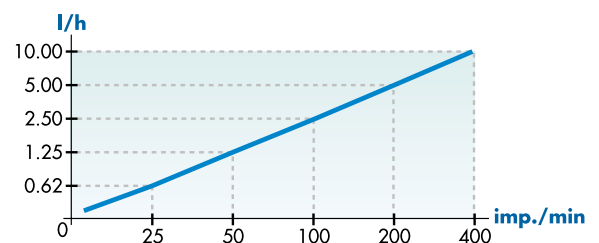


The fastest for a uniform dosing

The TEKNA series working at unprecedented 400 strokes/minute, allows a uniform dosing over a wide adjustment range. It covers a wide range of performances with only a few models, providing simplicity in after sales service and parts requirements.

Portata in l/h con:

	400 imp/min	200 imp/min	100 imp/min	50 imp/min
25	12,5	6,25	3,13	
11	5,5	2,75	1,37	
5,3	2,65	1,32	0,67	
2	1	0,5	0,25	



Versatility and ruggedness

All TEKNA series have IP 65 rated enclosure made of Polypropilene reinforced with glass fiber. This allows the pumps to be water and impact resistant and corrosion free.

Versatile installation as TEKNA series pumps allow for 3 fixing possibilities;

- wall mounting with only one fixing point;
- wall mounting with 2 or 4 fixing points;
- base mounting (on tank or existing wall mounting bracket with optional bracket).



Reliability

All SEKO pumps are tested using modern technologies; their reliability is assured through use of high quality materials, intensive laboratory tests and life stress tests. Every pump, is operated 6 hours at maximum speed before the final test.

Continous operation pumps

The pumps require only the power supply to work.
Flow rate is adjustable:

- changing the number of strokes per minute (F) from 1 to 400 or
- changing the percentage of flow rate (P) from 0 to 100%.

Adjustment is very easy as the pump will automatically adapt the parameters, i.e. setting flow rate (P) to 50% when visualising the number of strokes minute (F) the display will show 200.

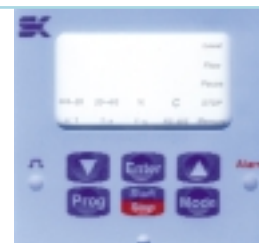


Proportional pump

The TEKNA series is the only proportional pump in the market that combines the constant function described above and all proportional functions into the same pump.

Pulse control

The pumps will accept dry contact inputs and dose proportionally to the input pulse frequency. The pumps manage the input pulses in various ways:



1:n PULSE STEP-UP

It's a multiplying proportional mode. By entering a value, in the range 1 and 9999, for parameter n, the step-up ratio is set, i.e. step-up with:
n=100, 1 pulse = 100 pump strokes
n = 250, 1 pulse = 250 pump strokes.
External Pacing is obtained by setting n=1

1:c MANUAL STEP-UP

It's a multiplying proportional mode where every time the START pushbutton is manually pressed the pump delivers c strokes. By entering a value, in the range 1 ... 9999, for parameter c, the step-up ratio is set.

0/4 - 20 20 - 0/4

PROPORTIONALITY TO 0/4-20 mA ANALOG SIGNAL

Analog signal can be used to control the stroking rate proportionally to a 0/4-20 mA signal. Direct (stroke rate increase proportionally to 0/4-20 mA signal) or inverse (stroke rate increases proportionally to 0/4-20 mA signal decrease), response is selectable Maximum or Minimum stroke frequency can be set.

Level LEVEL CONTROL

Two inputs for an early warning alarm and a lack of chemical alarm. An alarm relay may be provided as an optional. The alarm conditions are easily visible through the Level icon on the display, the red Alarm led flashing (early warning) or constantly lit (lack of chemical); the alarm relay is activated (if available).

n:1 PULSE STEP-DOWN

It's a dividing proportional mode. By entering a value, in the range 1 and 9999, for parameter n, the step-down ratio is set, i.e. step-down with:
n=500, 500 pulses = 1 pump stroke
n = 25, 25 pulses = 1 pump stroke.
External Pacing is obtained by setting n=1

Memory MEMORY

External pulses or manual START arriving whilst the pump is delivering a previous set of n or c strokes can be registered and worked off. The storage capacity is of 65535 external pulses or manual START.

When the memory is not empty the memory icon flashes. When the memory is full the red led on the front panel is ON and the alarm relay is activated (if available).

Technical data

Liquid contacted materials
Head type: STANDARD
SP
Pump Head
PP
Connectors
PP
Valve balls
Pyrex
Seals
FPM or EPDM
Diaphragm
PTFE

CHARACTERISTICS

Power Supply
230V 50-60Hz -10% + 15%

Isolation class
F

Protection degree
IP65

Working temperature
-10...40 °C

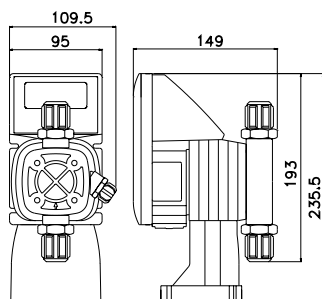
Pump is supplied with 1,5 metre power supply cable and european plug

Caratteristiche rilevate con acqua a temperatura ambiente con altezza aspirazione 1,5 metri.

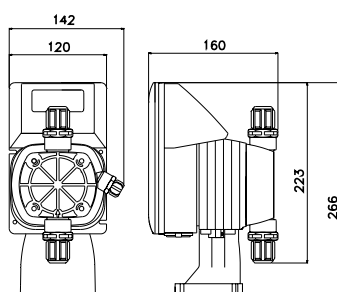
Model	Back Pressure	Flow rate	cc/stroke	stroke/min	Connections	Weight
	Bar	L/h				
601	12	1,5	0,06	400	4/6	1,7
	10	2	0,08			
	6	2,5	0,10			
602	8	5	0,21	400	4/6	1,7
	5	6	0,25			
	1	9	0,38			
901	16	6	0,25	400	4/6	3,1
	14	7	0,29			
	12	8	0,33			
902	10	10	0,42	400	4/6	3,1
	6	12	0,50			
	2	15	0,63			
903	5	25	1,04	400	8/12	3,2
	4	40	1,67			
	3	50	2,08			
904	2	60	2,50	400	8/12	3,2
	1	80	3,33			
	0	100	4,17			

Code ordering system

Pump type	Function	Model	Power supply	Head type
D	PG	602	A	SP
D= Digital TEKNA series	PG: proportional	See technical data table	A = 230 Vac 50-60 Hz B = 24 Vac 50-60 Hz C = 115 Vac 50-60 Hz	See technical data table



601 and 602 TEKNA Series



901, 902, 903 and 904 TEKNA Series